



Littleton Elementary School District (AZ)



Smarter Scheduling, Stronger Equity: Protecting Tier 1 Instruction and Expanding SPED Capacity



District Management Group

| Helping Schools and Students Thrive

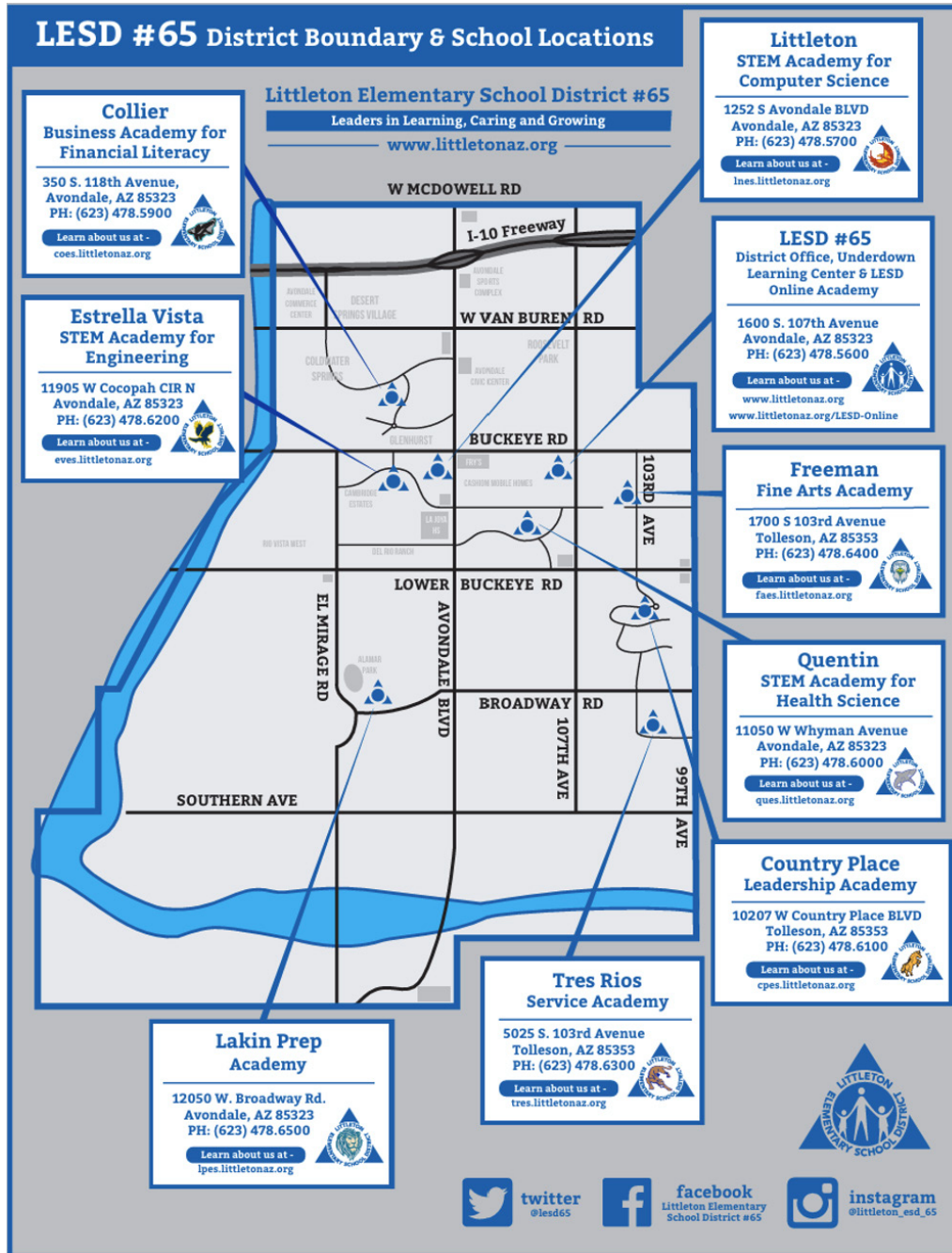
| www.dmggroupk12.com

9 Elementary schools

5,940

Students

Hispanic / Latino: 77.2%
Black / African American: 11.4%
White: 5.6%



The Tier 1 Problem: A Student Access Crisis

Littleton's transformation began when **two schools were placed into Targeted Support and Improvement (TSI) status due to low performance of the special education subgroup:**

Students with disabilities...

- Were performing 30-40 percentage points below state expectations
- Proficiency rates were as low as 4.13% in ELA and 4.43% in math

Littleton identified the major root cause; **Students with disabilities were consistently missing Tier 1 instruction due to fragmented scheduling practices.**

Before DMSchedules:

- **Students were often pulled from core instruction** even when alternative intervention blocks existed
- **Scheduling decisions were siloed and inconsistent** across schools
- **District leaders lacked real-time visibility** into service delivery and compliance
- **Issue was not just compliance, but also instruction access**
- SPED providers scheduled **pull-outs based on provider availability**

A critical question was raised: **Are we scheduling based on what students need... or what is easiest for adults?** This "adult convenience over student needs" theme became a turning point in the district's approach.

The Solution: DMSchedules as a System, Not a Tool

Littleton adopted DMSchedules districtwide to create a consistent scheduling structure that protects Tier 1 instruction and ensures equitable SPED service delivery.

Rather than relying on manual fixes, leaders implemented a system that made scheduling **transparent, measurable, and collaborative.**

Protecting Tier 1 instruction:

A major breakthrough came when Littleton redesigned master schedules to include:

- **Protected Tier 1 literacy and math blocks**
- **Clearly defined intervention windows ("WIN" periods)**
- **Shared schedules accessible across teams**

Additionally, Littleton created a **common operating system for scheduling**, helping teams move from reactive scheduling adjustments to proactive planning.

Operational Efficiency and Resource Savings:

Once scheduling data became visible, the district could finally answer questions that directly impact staffing costs:

- Who has capacity?
- Are providers maximizing group size?
- Are services being delivered efficiently (1:1 vs small group)?
- Do we need more staff - or do we need better scheduling?

Exhibit 1: Learning Environment Report outlines how much time students are spending in Gen Ed, Inclusion, and Pull out

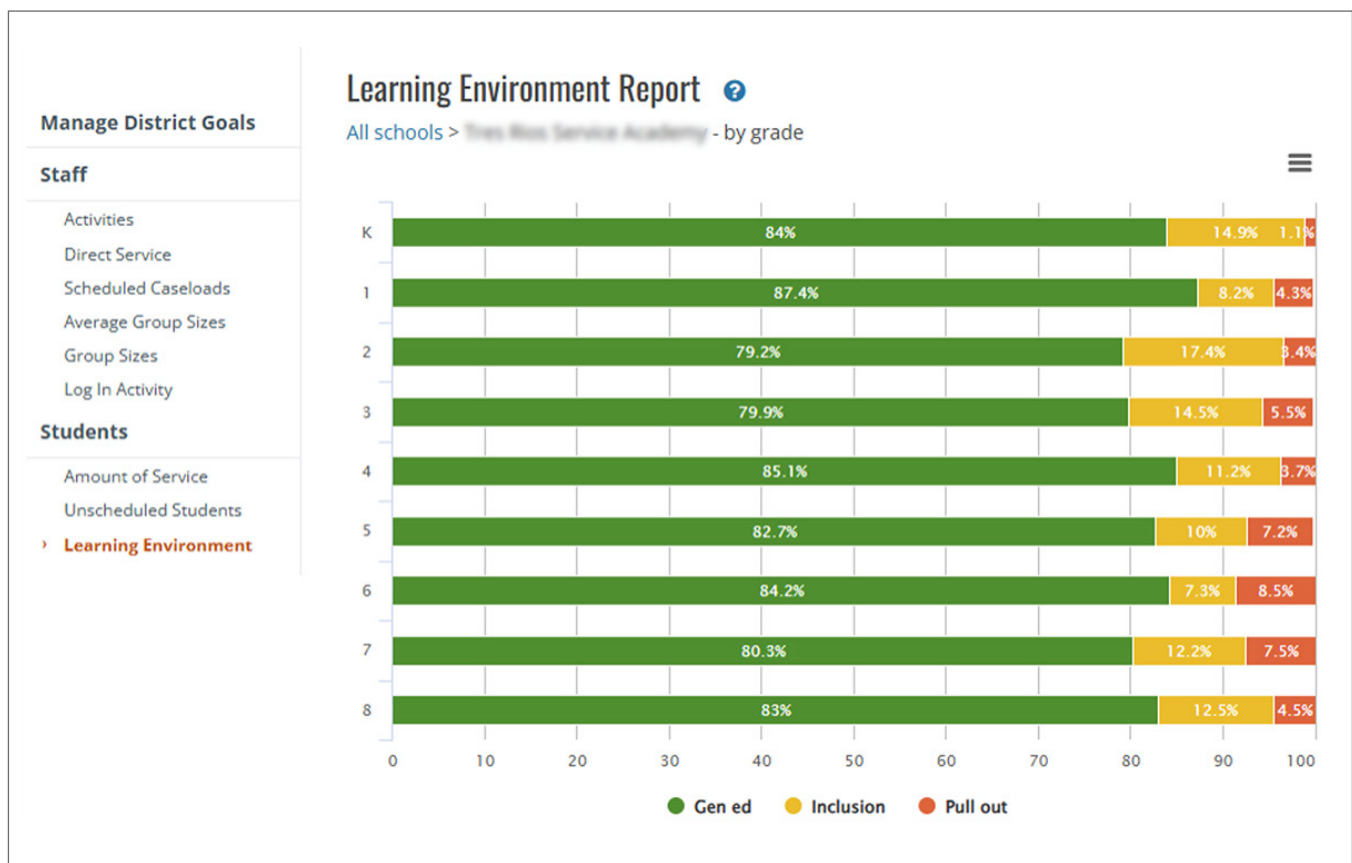


Exhibit 2: Staff summary report shows each educator’s caseload, % of direct service, and average study group size

Schedule	School	Caseload	Direct Service	Average Group Size
[User Icon]	Littleton STEM Academy	38 38	21% 435	2.7
[User Icon]	PreSchool	49 49	57% 1190	1.3
[User Icon]	Collier Business Academy	16 16	13% 269	3.1
[User Icon]	Collier Business Academy	56 56	40% 840	2.4
[User Icon]	PreSchool Lakin Prep Academy Littleton STEM Academy	66 6 58 2	67% 1405	5.5
[User Icon]	Tres Rios Service Academy	64 64	65% 1371	2.4

This service provider is seeing the most students 1:1

This dashboard highlights the large discrepancy between group sizes among staff

Impact:

- Leaders could identify underutilized capacity
- Caseload decisions became equity-driven, not just “student count” based
- Contracted services could be used more strategically
- Scheduling became a lever for cost control, not just compliance

Results:

Mission Accomplished: Exiting TSI Oversight

Primary Result: Successful exit from TSI monitoring at Collier Elementary.



Increased Access

Tier 1 access for SPED students.



Improved Proficiency

Growth on state assessments.



Consistent Delivery

Reduced missed minutes & proactive compliance.

Operational Win: Shifted from reactive cleanup to real-time visibility.